

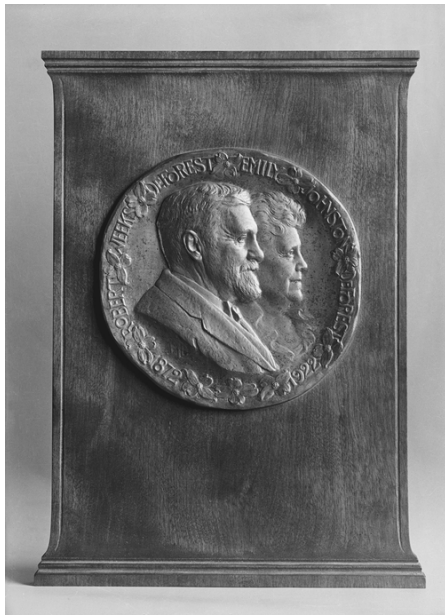
## Robert W de Forest

\*1848 +1931

Gästebücher Band II

### Aufenthalt Schloss Neubeuern:

3. September 1892



Artist Evelyn **Beatrice Longman** (1874–1954)

Title Mr. and Mrs. **Robert W. de Forest**

Date 1922

Medium Bronze and gold leaf

Dimensions Diam. 5 1/2 in. (14 cm)

Credit Line Gift of Mrs. **Robert W. de Forest**, 1934

#### Quelle:

[http://www.metmuseum.org/works\\_of\\_art/collection\\_database/american\\_paintings\\_and\\_sculpture/mr\\_and\\_mrs\\_robert\\_w\\_de\\_forest\\_evelyn\\_beatrice\\_longman/objectview.aspx?collID=2&OID=20015413](http://www.metmuseum.org/works_of_art/collection_database/american_paintings_and_sculpture/mr_and_mrs_robert_w_de_forest_evelyn_beatrice_longman/objectview.aspx?collID=2&OID=20015413)

Much attention has been given to **Robert W de Forest** (1848-1931) for his extraordinary philanthropic activities, the most significant of which in this context is the gift to the Metropolitan Museum of Art of the American Wing. Yet it is to his wife, **Emily Johnston de Forest**, that credit can be given for igniting an interest in early American objects that led to the creation of the wing. An indefatigable collector, she made gifts to the museum and the American Wing that deserve long overdue recognition.

#### Quelle:

[http://findarticles.com/p/articles/mi\\_m1026/is\\_1\\_157/ai\\_59014978/](http://findarticles.com/p/articles/mi_m1026/is_1_157/ai_59014978/)